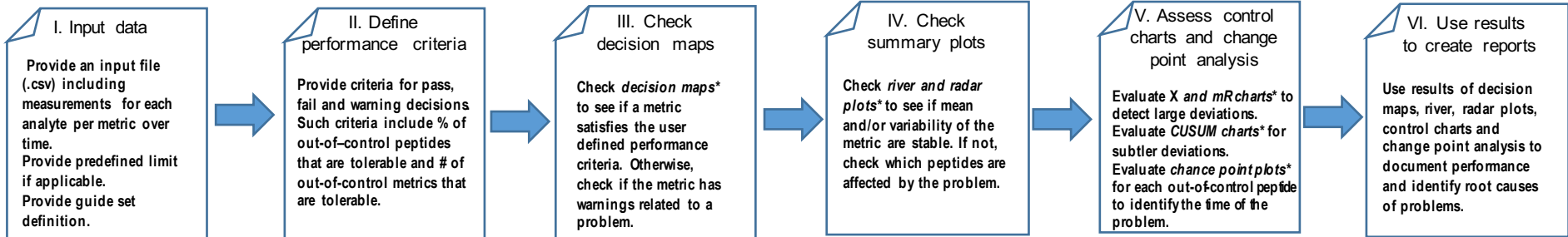


MSstatsQC v 1.0.0

Workflow: `MSstatsQC` is an open-source R-based package and web application for statistical analysis and monitoring of quality control and system suitability testing data produced by spectrometry-based proteomic experiments.

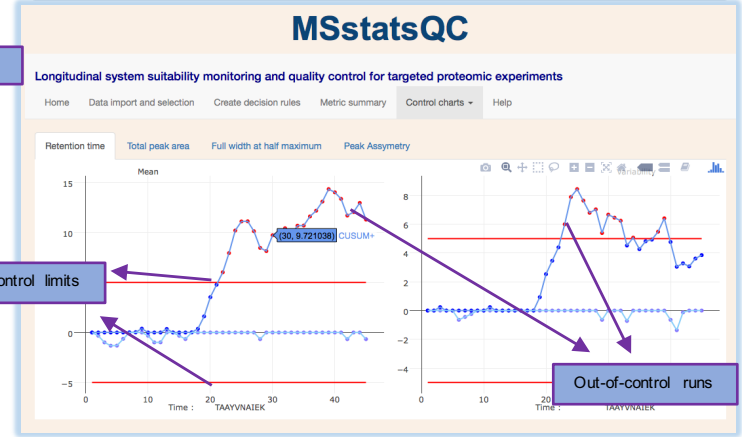
Cheat Sheet
Learn more at mstats.org/mstatsqc



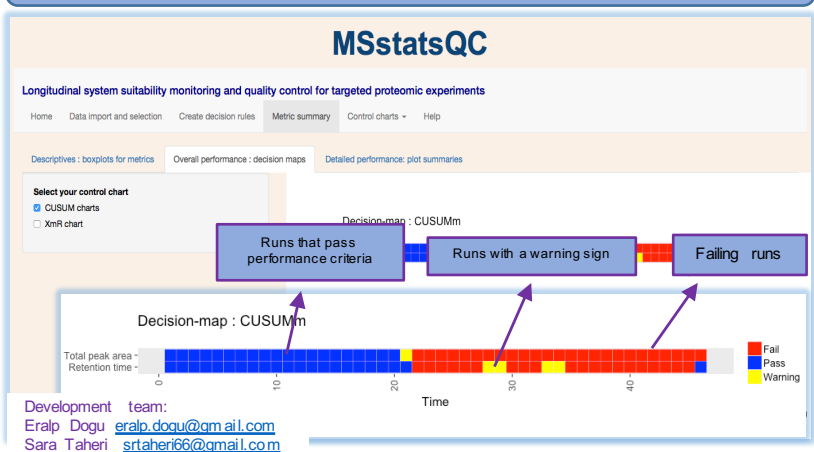
I. Input data

II. Define performance criteria

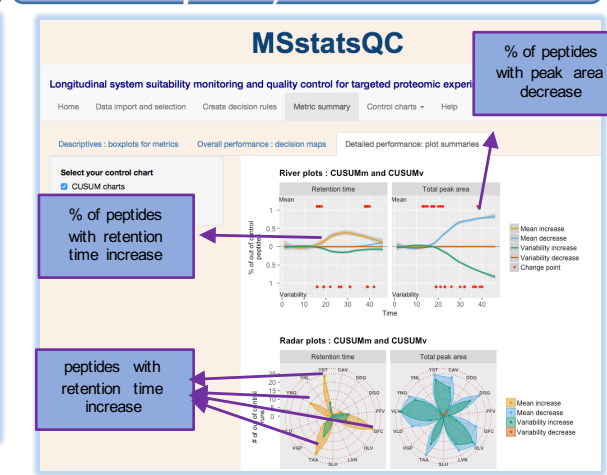
V. Assess control charts (X and mR* and CUSUMm* and CUSUMv*) and change point analysis*



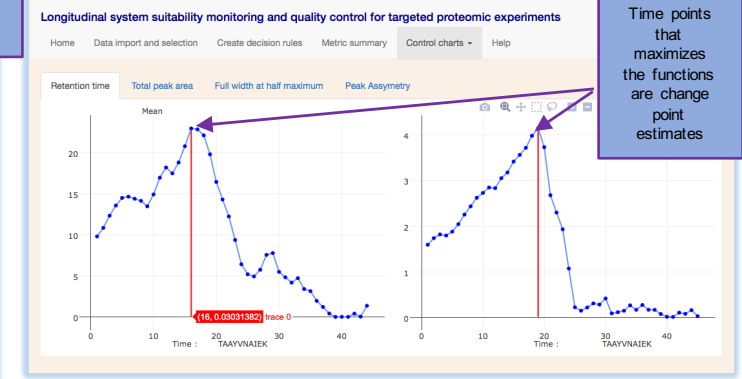
III. Check decision maps*



IV. Check summary plots (river plots* and radar plots*)



MSstatsQC



Development team:
Eralp Dogu eralp.dogu@gmail.com
Sara Taheri srtaheri66@gmail.com
Olga Vitek o.vitek@neu.edu

*Methods that are available only through MSstatsQC